

# NO. 1 LACEFIELD

## THE MANSION HOUSE



SALES AND INFORMATION  
**028 9042 8661**  
ANTRIMCONSTRUCTION.NET

Ref: 20221001



COMPUTER VISUAL

CHOOSE YOUR PERFECT  
ANTRIM CONSTRUCTION HOME

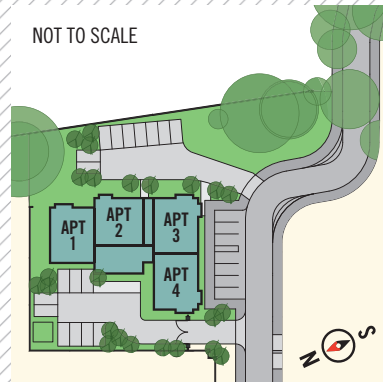
**LACEFIELD**  
UPPER NEWTOWNARDS ROAD, BELFAST

# NO. 1 LACEFIELD THE MANSION HOUSE

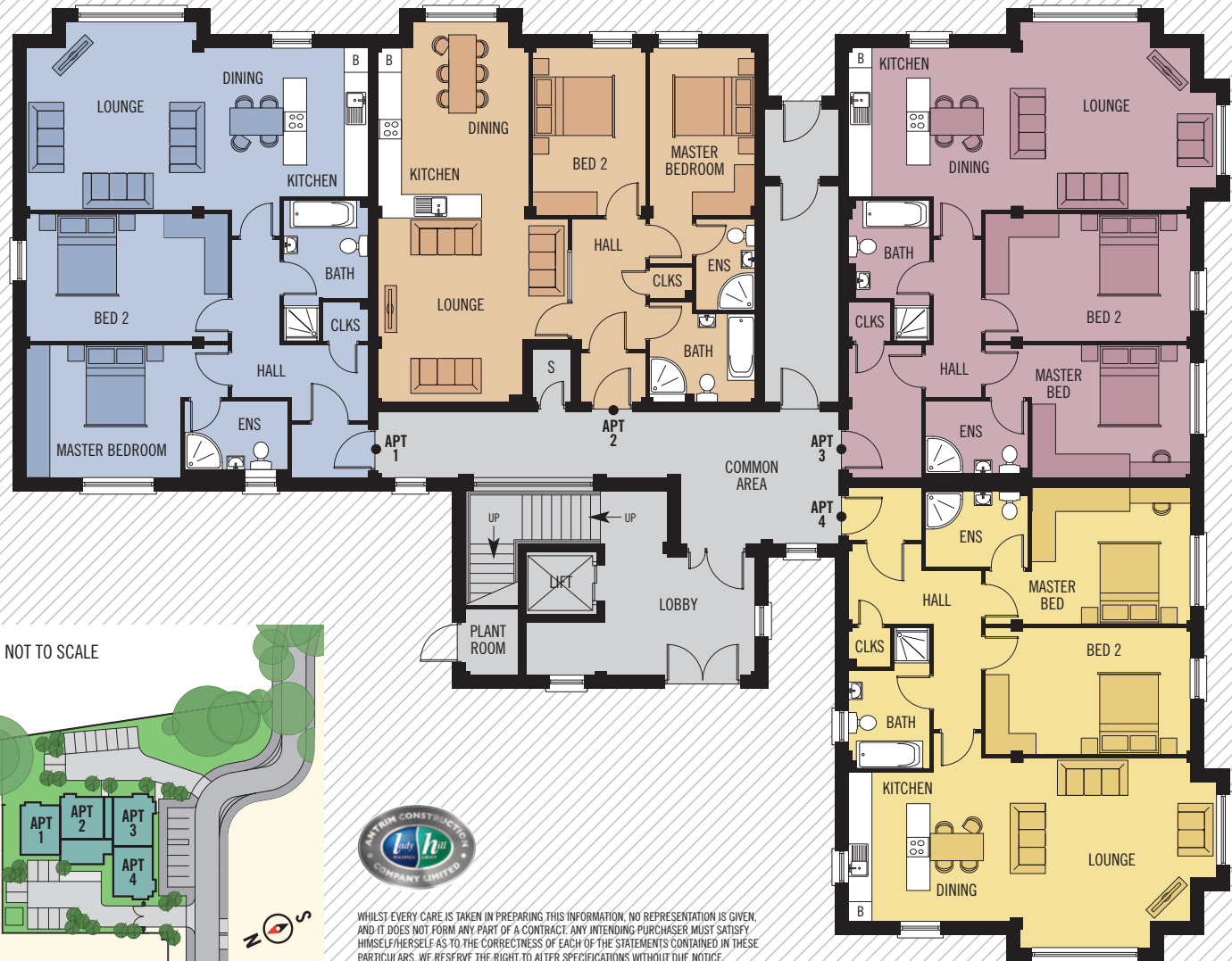
## GROUND FLOOR

### APPROXIMATE SIZES

- APARTMENT 1 (SITE 44) - 98M<sup>2</sup> OR 1,057 SQ FT
- APARTMENT 2 (SITE 39) - 86M<sup>2</sup> OR 930 SQ FT
- APARTMENT 3 (SITE 35) - 100M<sup>2</sup> OR 1,075 SQ FT
- APARTMENT 4 (SITE 32) - 101M<sup>2</sup> OR 1,078 SQ FT



WHILST EVERY CARE IS TAKEN IN PREPARING THIS INFORMATION, NO REPRESENTATION IS GIVEN, AND IT DOES NOT FORM ANY PART OF A CONTRACT. ANY INTENDING PURCHASER MUST SATISFY HIMSELF/HERSELF AS TO THE CORRECTNESS OF EACH OF THE STATEMENTS CONTAINED IN THESE PARTICULARS. WE RESERVE THE RIGHT TO ALTER SPECIFICATIONS WITHOUT DUE NOTICE.



### APARTMENT 1 - SITE 44

LOUNGE	4.35 x 4.14M	14'3" x 13'6" PLUS BAY
KITCHEN / DINING	4.38 x 4.14M	14'4" x 13'6" MAX
MASTER BEDROOM	5.16 x 3.39M	16'11" x 11'1" MAX
ENSUITE	2.63 x 1.94M	8'7" x 6'4"
BEDROOM 2	5.16 x 3.24M	16'11" x 10'7"
BATHROOM	3.59 x 2.14M	11'9" x 7'0" MAX

### APARTMENT 2 - SITE 39

LOUNGE	4.85 x 4.67M	15'10" x 15'3" MAX
KITCHEN / DINING	4.37 x 3.85M	14'4" x 12'7" PLUS BAY
MASTER BEDROOM	4.27 x 2.70M	14'0" x 8'10" MIN
ENSUITE	2.32 x 1.50M	7'7" x 4'11"
BEDROOM 2	4.27 x 2.89M	14'0" x 9'5"
BATHROOM	2.70 x 2.55M	8'10" x 8'4" MAX

### APARTMENT 3 - SITE 35

LOUNGE	4.35 x 4.14M	14'3" x 13'6" PLUS BAYS
KITCHEN / DINING	4.38 x 4.14M	14'4" x 13'6" MAX
MASTER BEDROOM	5.24 x 3.39M	17'2" x 11'1" MAX
ENSUITE	2.63 x 1.94M	8'7" x 6'4"
BEDROOM 2	5.24 x 3.24M	17'2" x 10'7"
BATHROOM	3.59 x 2.07M	11'9" x 6'9" MAX

### APARTMENT 4 - SITE 32

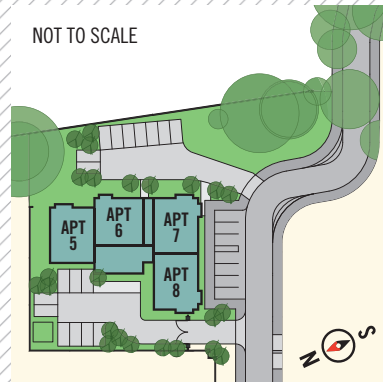
LOUNGE	4.35 x 4.16M	14'3" x 13'7" PLUS BAYS
KITCHEN / DINING	4.38 x 4.16M	14'4" x 13'7" MAX
MASTER BEDROOM	5.24 x 3.48M	17'2" x 11'5" MAX
ENSUITE	2.63 x 2.03M	8'7" x 6'7"
BEDROOM 2	5.24 x 3.24M	17'2" x 10'7"
BATHROOM	3.59 x 2.07M	11'9" x 6'9" MAX

# NO. 1 LACEFIELD THE MANSION HOUSE

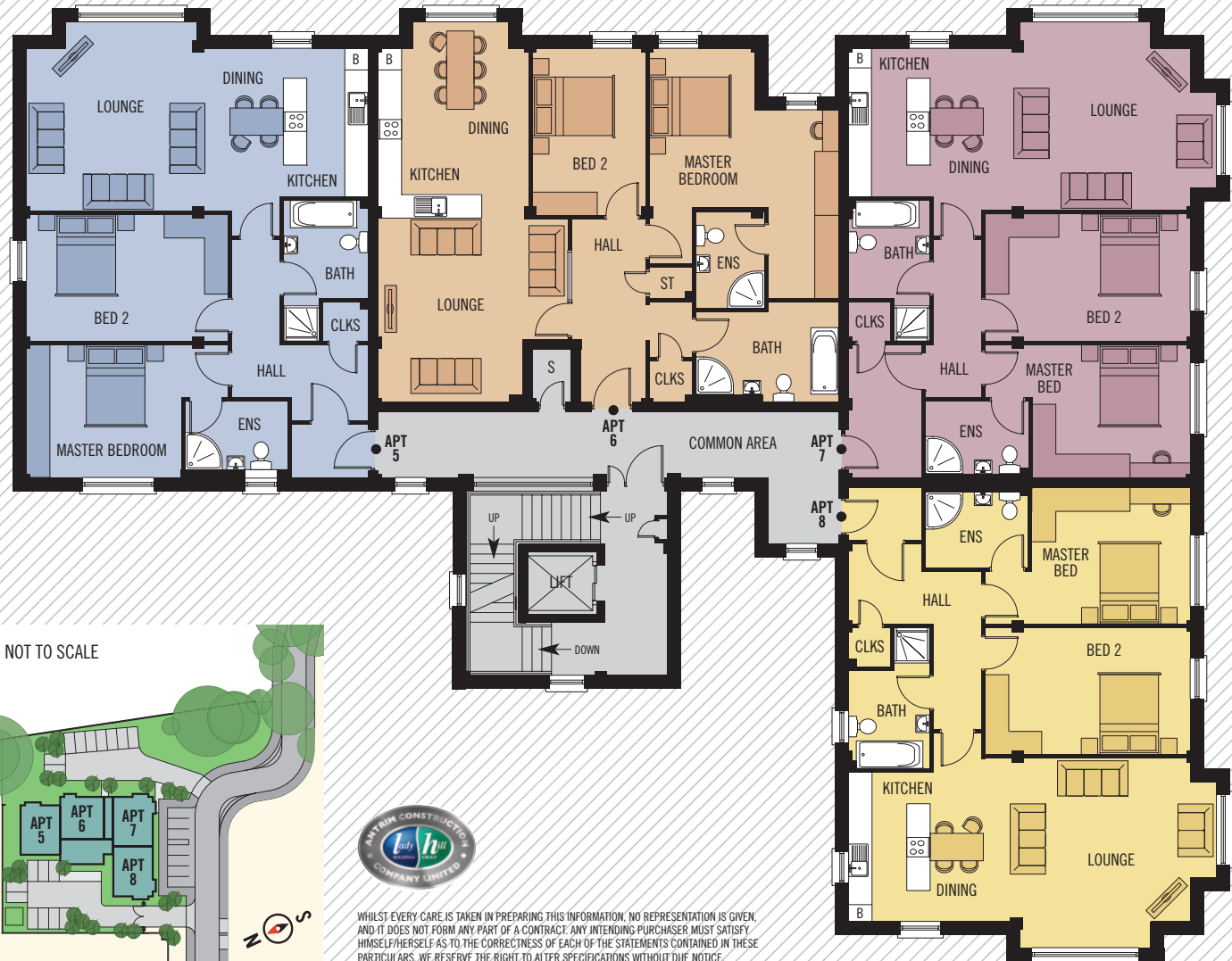
## FIRST FLOOR

### APPROXIMATE SIZES

- APARTMENT 5 (SITE 45) - 97M<sup>2</sup> OR 1,047 SQ FT
- APARTMENT 6 (SITE 40) - 102M<sup>2</sup> OR 1,102 SQ FT
- APARTMENT 7 (SITE 36) - 100M<sup>2</sup> OR 1,075 SQ FT
- APARTMENT 8 (SITE 33) - 101M<sup>2</sup> OR 1,078 SQ FT



WHILST EVERY CARE IS TAKEN IN PREPARING THIS INFORMATION, NO REPRESENTATION IS GIVEN, AND IT DOES NOT FORM ANY PART OF A CONTRACT. ANY INTENDING PURCHASER MUST SATISFY HIMSELF/HERSELF AS TO THE CORRECTNESS OF EACH OF THE STATEMENTS CONTAINED IN THESE PARTICULARS. WE RESERVE THE RIGHT TO ALTER SPECIFICATIONS WITHOUT DUE NOTICE.



### APARTMENT 5 - SITE 45

LOUNGE	4.35 x 4.14M	14'3" x 13'6" PLUS BAY
KITCHEN / DINING	4.38 x 4.14M	14'4" x 13'6" MAX
MASTER BEDROOM	5.16 x 3.39M	16'11" x 11'1" MAX
ENSUITE	2.63 x 1.94M	8'7" x 6'4"
BEDROOM 2	5.16 x 3.24M	16'11" x 10'7"
BATHROOM	3.59 x 2.14M	11'9" x 7'0" MAX

### APARTMENT 6 - SITE 40

LOUNGE	4.85 x 4.67M	15'10" x 15'3" MAX
KITCHEN / DINING	4.37 x 3.85M	14'4" x 12'7" PLUS BAY
MASTER BEDROOM	4.06 x 2.70M	13'3" x 8'10" MIN
DRESSING	4.82 x 2.13M	15'9" x 6'11" MAX
ENSUITE	2.48 x 1.75M	8'1" x 5'8"
BEDROOM 2	4.27 x 2.89M	14'0" x 9'5"
BATHROOM	3.63 x 2.55M	11'10" x 8'4" MAX

### APARTMENT 7 - SITE 36

LOUNGE	4.35 x 4.14M	14'3" x 13'6" PLUS BAYS
KITCHEN / DINING	4.38 x 4.14M	14'4" x 13'6" MAX
MASTER BEDROOM	5.24 x 3.39M	17'2" x 11'1" MAX
ENSUITE	2.63 x 1.94M	8'7" x 6'4"
BEDROOM 2	5.24 x 3.24M	17'2" x 10'7"
BATHROOM	3.59 x 2.07M	11'9" x 6'9" MAX

### APARTMENT 8 - SITE 33

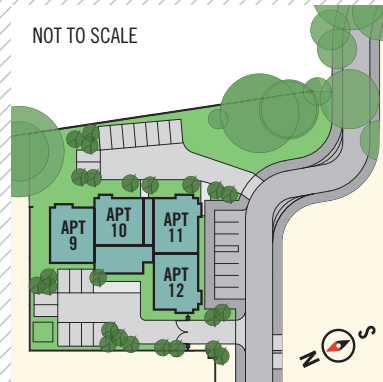
LOUNGE	4.35 x 4.16M	14'3" x 13'7" PLUS BAYS
KITCHEN / DINING	4.38 x 4.16M	14'4" x 13'7" MAX
MASTER BEDROOM	5.24 x 3.48M	17'2" x 11'5" MAX
ENSUITE	2.63 x 2.03M	8'7" x 6'7"
BEDROOM 2	5.24 x 3.24M	17'2" x 10'7"
BATHROOM	3.59 x 2.07M	11'9" x 6'9" MAX

# NO. 1 LACEFIELD THE MANSION HOUSE

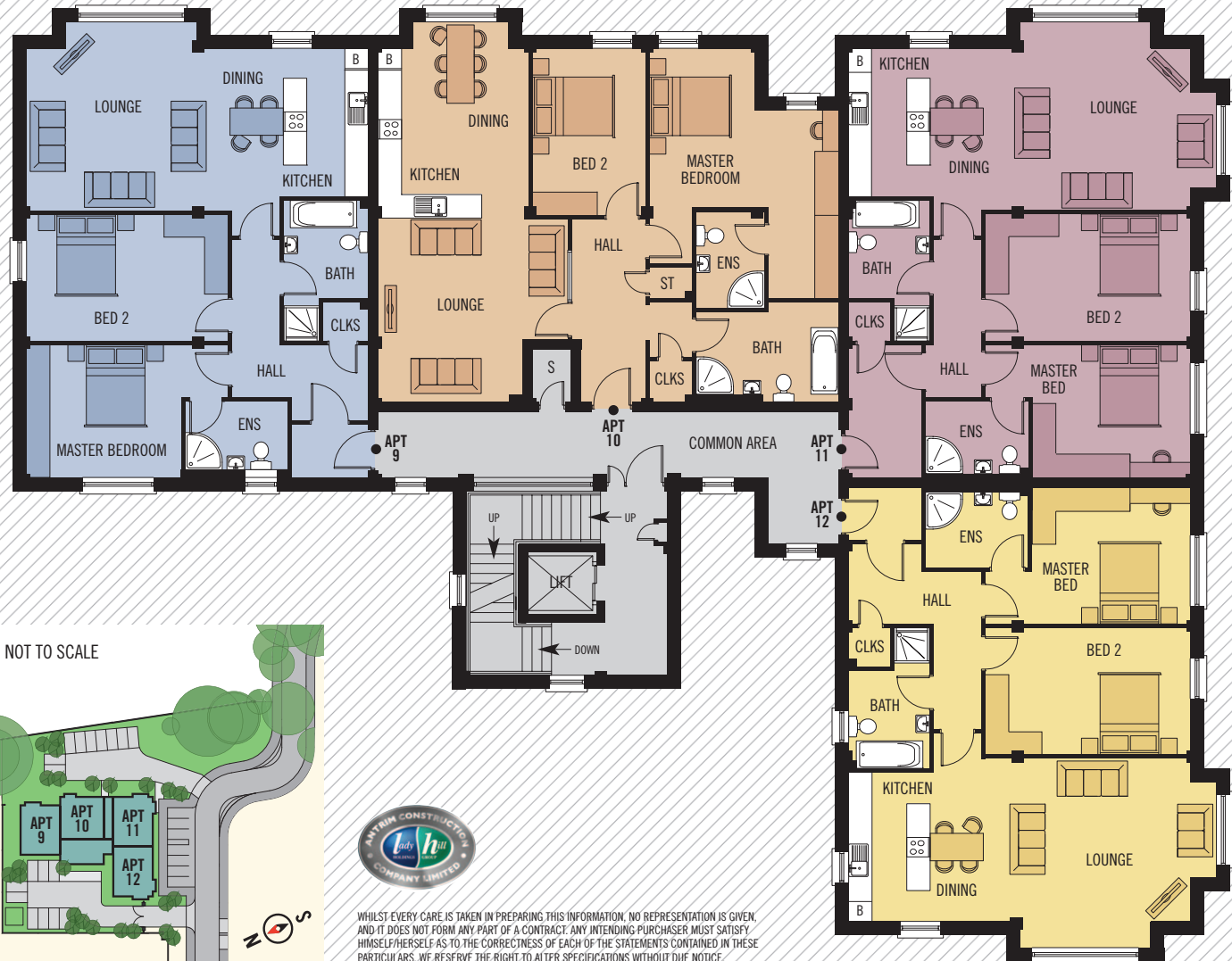
## SECOND FLOOR

### APPROXIMATE SIZES

- APARTMENT 9 (SITE 46) - 97M<sup>2</sup> OR 1,047 SQ FT
- APARTMENT 10 (SITE 41) - 102M<sup>2</sup> OR 1,102 SQ FT
- APARTMENT 11 (SITE 37) - 100M<sup>2</sup> OR 1,075 SQ FT
- APARTMENT 12 (SITE 34) - 101M<sup>2</sup> OR 1,078 SQ FT



WHILST EVERY CARE IS TAKEN IN PREPARING THIS INFORMATION, NO REPRESENTATION IS GIVEN, AND IT DOES NOT FORM ANY PART OF A CONTRACT. ANY INTENDING PURCHASER MUST SATISFY HIMSELF/HERSELF AS TO THE CORRECTNESS OF EACH OF THE STATEMENTS CONTAINED IN THESE PARTICULARS. WE RESERVE THE RIGHT TO ALTER SPECIFICATIONS WITHOUT DUE NOTICE.



### APARTMENT 9 - SITE 46

LOUNGE	4.35 x 4.14M	14'3" x 13'6" PLUS BAY
KITCHEN / DINING	4.38 x 4.14M	14'4" x 13'6" MAX
MASTER BEDROOM	5.16 x 3.39M	16'11" x 11'1" MAX
ENSUITE	2.63 x 1.94M	8'7" x 6'4"
BEDROOM 2	5.16 x 3.24M	16'11" x 10'7"
BATHROOM	3.59 x 2.14M	11'9" x 7'0" MAX

### APARTMENT 10 - SITE 41

LOUNGE	4.85 x 4.67M	15'10" x 15'3" MAX
KITCHEN / DINING	4.37 x 3.85M	14'4" x 12'7" PLUS BAY
MASTER BEDROOM	4.06 x 2.70M	13'3" x 8'10" MIN
DRESSING	4.82 x 2.13M	15'9" x 6'11" MAX
ENSUITE	2.48 x 1.75M	8'1" x 5'8"
BEDROOM 2	4.27 x 2.89M	14'0" x 9'5"
BATHROOM	3.63 x 2.55M	11'10" x 8'4" MAX

### APARTMENT 11 - SITE 37

LOUNGE	4.35 x 4.14M	14'3" x 13'6" PLUS BAYS
KITCHEN / DINING	4.38 x 4.14M	14'4" x 13'6" MAX
MASTER BEDROOM	5.24 x 3.39M	17'2" x 11'1" MAX
ENSUITE	2.63 x 1.94M	8'7" x 6'4"
BEDROOM 2	5.24 x 3.24M	17'2" x 10'7"
BATHROOM	3.59 x 2.07M	11'9" x 6'9" MAX

### APARTMENT 12 - SITE 34

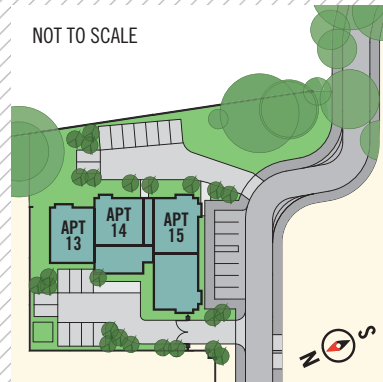
LOUNGE	4.35 x 4.16M	14'3" x 13'7" PLUS BAYS
KITCHEN / DINING	4.38 x 4.16M	14'4" x 13'7" MAX
MASTER BEDROOM	5.24 x 3.48M	17'2" x 11'5" MAX
ENSUITE	2.63 x 2.03M	8'7" x 6'7"
BEDROOM 2	5.24 x 3.24M	17'2" x 10'7"
BATHROOM	3.59 x 2.07M	11'9" x 6'9" MAX

# NO. 1 LACEFIELD THE MANSION HOUSE

## THIRD FLOOR

### APPROXIMATE SIZES

APARTMENT 13 (SITE 47) - 95M<sup>2</sup> OR 1,023 SQ FT  
 APARTMENT 14 (SITE 42) - 101M<sup>2</sup> OR 1,078 SQ FT  
 APARTMENT 15 (SITE 38) - 96M<sup>2</sup> OR 1,033 SQ FT



WHILST EVERY CARE IS TAKEN IN PREPARING THIS INFORMATION, NO REPRESENTATION IS GIVEN, AND IT DOES NOT FORM ANY PART OF A CONTRACT. ANY INTENDING PURCHASER MUST SATISFY HIMSELF/HERSELF AS TO THE CORRECTNESS OF EACH OF THE STATEMENTS CONTAINED IN THESE PARTICULARS. WE RESERVE THE RIGHT TO ALTER SPECIFICATIONS WITHOUT DUE NOTICE.

### APARTMENT 13 - SITE 47

LOUNGE	4.25 x 4.14M	13'11" x 13'6"
KITCHEN / DINING	4.17 x 4.14M	13'8" x 13'6" MAX
MASTER BEDROOM	5.16 x 3.39M	16'11" x 11'1" MAX
ENSUITE	2.63 x 1.94M	8'7" x 6'4"
BEDROOM 2	5.16 x 3.24M	16'11" x 10'7"
BATHROOM	3.59 x 2.14M	11'9" x 7'0" MAX

### APARTMENT 14 - SITE 42

LOUNGE	4.85 x 4.67M	15'10" x 15'3" MAX
KITCHEN / DINING	4.37 x 3.85M	14'4" x 12'7"
MASTER BEDROOM	4.06 x 2.70M	13'3" x 8'10" MIN
DRESSING	4.82 x 2.13M	15'9" x 6'11" MAX
ENSUITE	2.48 x 1.75M	8'1" x 5'8"
BEDROOM 2	4.27 x 2.89M	14'0" x 9'5"
BATHROOM	3.63 x 2.55M	11'10" x 8'4" MAX

### APARTMENT 15 - SITE 38

LOUNGE	4.26 x 4.14M	13'11" x 13'6"
KITCHEN / DINING	4.16 x 4.14M	13'7" x 13'6" MAX
MASTER BEDROOM	5.24 x 3.39M	17'2" x 11'1" MAX
ENSUITE	2.63 x 1.94M	8'7" x 6'4"
BEDROOM 2	5.24 x 3.24M	17'2" x 10'7"
BATHROOM	3.59 x 2.07M	11'9" x 6'9" MAX

# NO. 1 LACEFIELD THE MANSION HOUSE

## FOURTH & FIFTH FLOOR PENTHOUSE

### APPROXIMATE SIZES

APARTMENT 16 (SITE 43) - 143M<sup>2</sup> OR 1,539 SQ FT



COMPUTER VISUAL

### PENTHOUSE SUITE



WHILST EVERY CARE IS TAKEN IN PREPARING THIS INFORMATION, NO REPRESENTATION IS GIVEN, AND IT DOES NOT FORM ANY PART OF A CONTRACT. ANY INTENDING PURCHASER MUST SATISFY HIMSELF/HERSELF AS TO THE CORRECTNESS OF EACH OF THE STATEMENTS CONTAINED IN THESE PARTICULARS. WE RESERVE THE RIGHT TO ALTER SPECIFICATIONS WITHOUT DUE NOTICE.

### APARTMENT 16 - SITE 43

LIVING / DINING	8.23 x 5.05M	27'0" x 16'6" MAX	MASTER BEDROOM	4.14 x 4.02M	13'6" x 13'2" MIN
KITCHEN	3.08 x 2.75M	10'1" x 9'0" MAX	DRESSING AREA	2.31 x 1.78M	7'6" x 5'10"
UTILITY	3.06 x 1.61M	10'0" x 5'3"	ENSUITE	2.92 x 1.70M	9'6" x 5'6"
BEDROOM 2	5.15 x 4.48M	16'10" x 14'8" MAX			
BATHROOM	3.06 x 2.14M	10'0" x 7'0"			

