



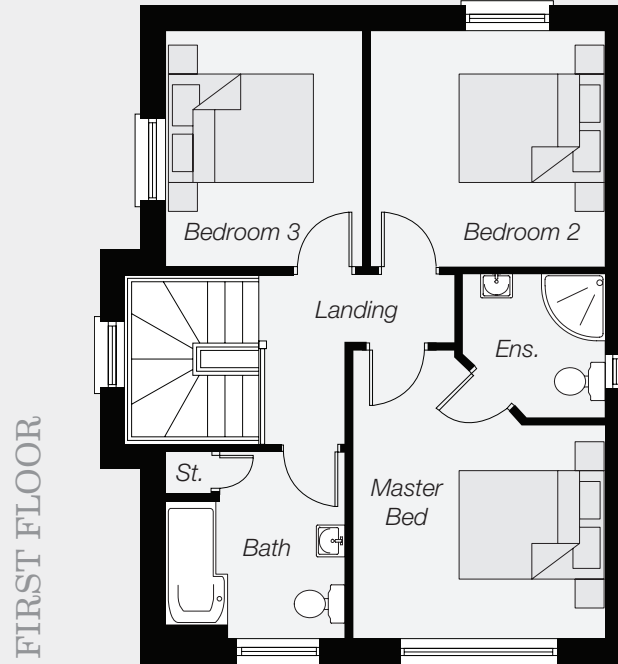
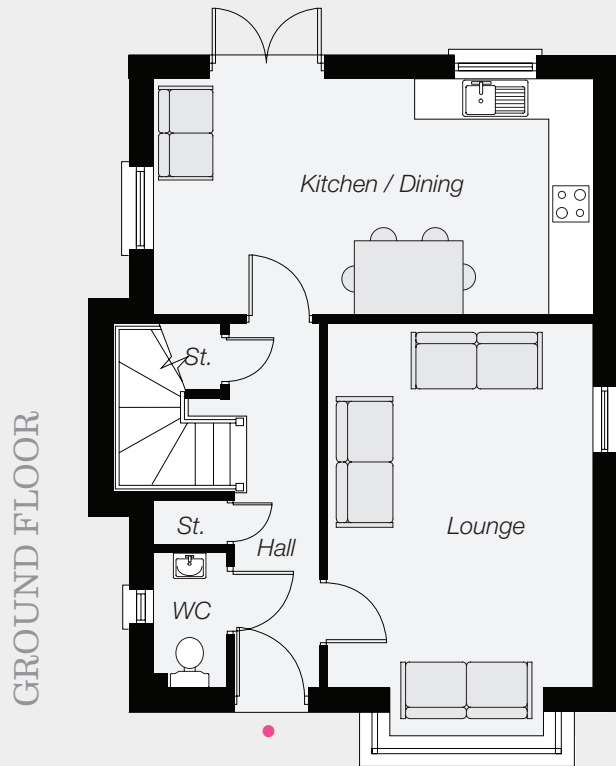
*Computer visual.*

TYPE C

THE  
**GALLOWAY**  
PHASE AT  
**WOODBROOK**  
Ballinderry Road  
Lisburn



Site Numbers: 211 & 213



## GROUND FLOOR

Entrance Hall (with separate WC)  
 Lounge (inc Bay) 18'6" x 11'9"  
 Kitchen/Dining 19'7" x 10'6"

## FIRST FLOOR

Master Bedroom (max) 12'10" x 11'2"  
 Ensuite  
 Bedroom 2 10'6" x 10'4"  
 Bedroom 3 10'6" x 8'8"  
 Bathroom

These particulars do not constitute any part of an offer or contract. None of the statements contained in these particulars are to be relied on as statements or representations of fact and intending purchasers must satisfy themselves by inspection or otherwise as to the correctness of each of the statements contained in these particulars. All measurements of area are quoted as Net Sales Area which is calculated in accordance with the RICS Code of Measuring Practice (6th Edition) APP 21. Configurations of kitchens, bathrooms and wardrobes may be subject to alteration from those illustrated without prior notification. Purchasers should satisfy themselves as to the current specification at the time of booking. The Vendor does not make or give, and neither the Selling Agent, nor any person in their employment, has any authority to make or give any representation or warranty whatever in relation to any property. Computer visuals are for illustration only. Plans are not to scale and all dimensions shown are approximate.

## TOTAL FLOOR AREA

1,135 sq. ft. approx.



Simon Brien Residential  
 525 Lisburn Road  
 Belfast BT9 7GQ  
**Telephone** 028 9066 8888  
**Email** southbelfast@simonbrien.com

[www.simonbrien.com](http://www.simonbrien.com)



Computer visual.



[www.laganhomes.com](http://www.laganhomes.com)